



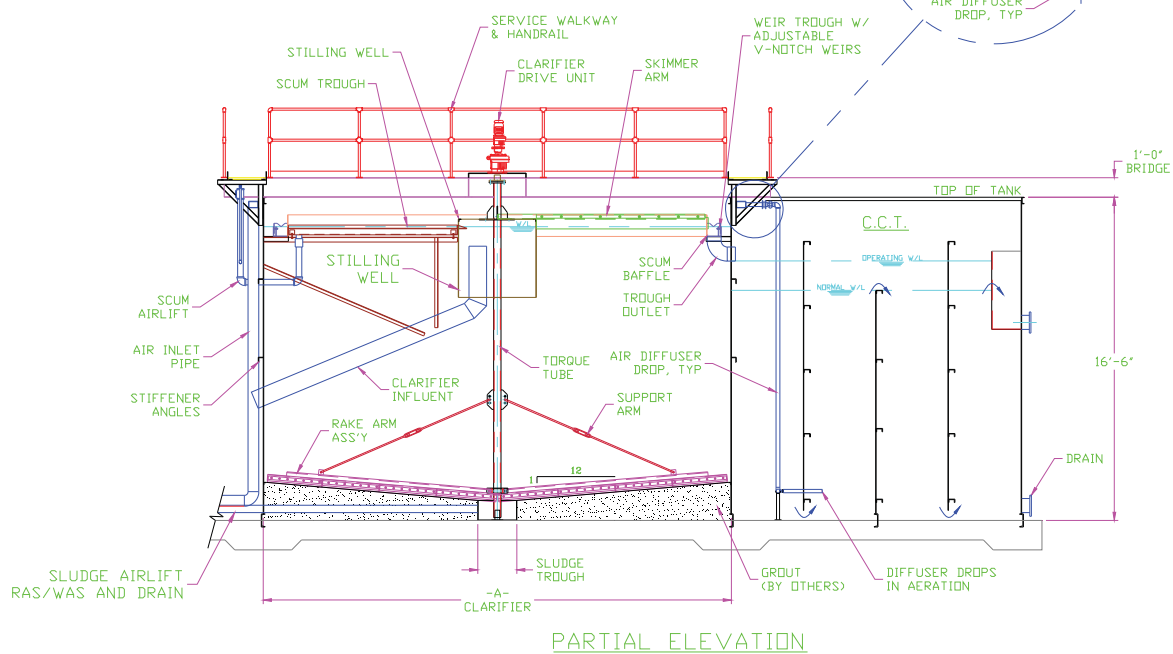
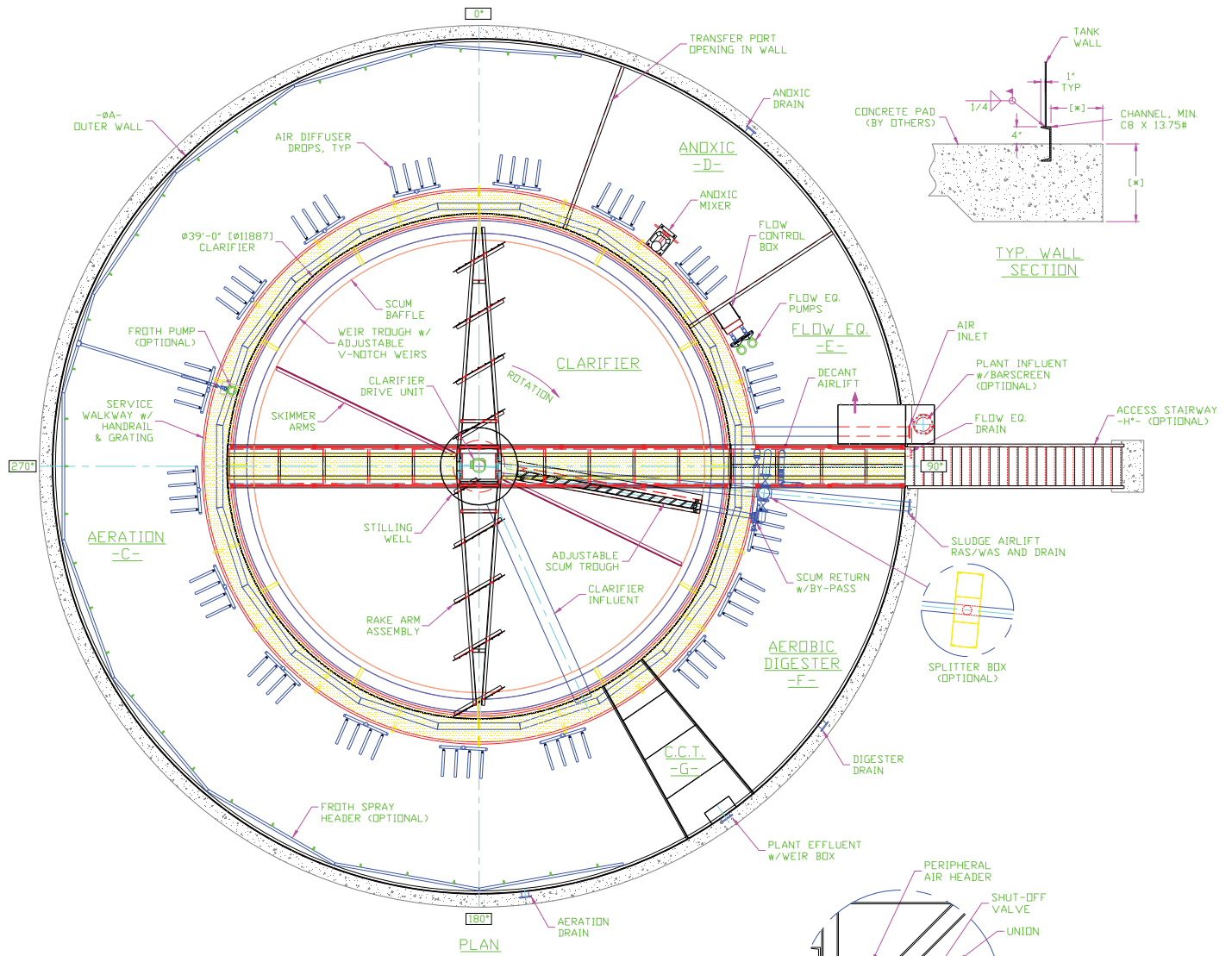
*"Specialized Products For People and Industry Since 1978"*

## **Circular Field-Erected Wastewater Treatment Systems**

**FOR HIGH CAPACITY, HIGH LEVEL TREATMENT**



6223 Halifax Avenue South • Edina, MN 55424 • Phone: (952) 491-0368  
Fax: (952) 926-0814 • Email: [EnvProducts@EnvProducts.com](mailto:EnvProducts@EnvProducts.com) • Web: [www.EnvProducts.com](http://www.EnvProducts.com)

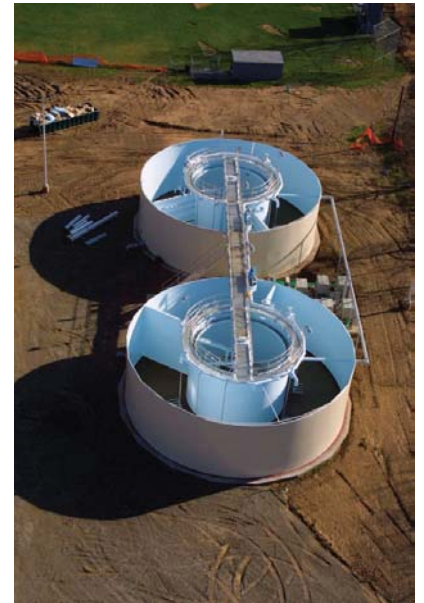


For the growing Municipality, Residential Subdivisions, Mobile Home Developments, Small Cities or Towns, Industrial Waste Applications

Sizes from 150,000 to 2,000,000 GPD capacities

Flexible design permits process selection – extended aeration, conventional activated sludge, complete mix

Internal equipment packages for customer supplied concrete tankage Full compliment of optional accessories available for “custom” applications



## OUTSTANDING FEATURES

EnvProducts systems can be installed both below and above grade with a minimum of installation expenses. Since they are relatively small in size (determined by amount of flow) and odor-free, they can be installed at almost any location, and painted or landscaped to match the surrounding area. Several other features of EnvProducts systems are:

- Rolled handrail either painted steel or aluminum
- Optional stairways 45 degree straight or rolled to contour the plant
- High Degree of Treatment (85-98%  $\pm$  BOD<sub>5</sub> Removal)
- Low Maintenance Cost
- Ease of Installation

## ALSO FROM ENVIRONMENTAL PRODUCTS:

- Packaged Wastewater Treatment Plants for flow from 1,000 GPD to 150,000 GPD
- Packaged Dual Media Tertiary Treatment Systems
- Upflow, gravity moving bed filters
- Five-Star Disc Filters
- Prefabricated Lift Stations & Pumping Equipment
- Prefabricated steel Mechanical Clarifiers & Internal equipment packages